

Dose Statistical Data Based on the Information Registered with the System of Registration and Management of Radiation Exposure Doses for Workers at Nuclear Power Plants and Nuclear Facilities (Fiscal 2014)

Radiation Dose Registration Center

1. Release of statistical data

The Radiation Dose Registration Center of the Radiation Effects Association (RADREC) assigns an individualized registration number in RADREC to each worker engaged in radiation work, at nuclear licensees' facilities, such as nuclear power plants and nuclear fuel fabrication facilities that are part of the System of Registration and Management of Radiation Exposure Doses for Nuclear Facilities (The Nuclear Registration and Management System), and then performs systematic regulatory control of the workers' radiation exposure doses. Thus, even if workers move to other nuclear power plants or nuclear facilities (collective referred to below as "nuclear sites") to engage in other radiation work, the system allows RADREC to track each worker's doses accurately, because the nuclear licensees who join the Nuclear Registration and Management System register workers' doses at all work sites.

Based on the registered data, RADREC has released statistical data that represent the radiation control status for workers engaged in radiation work at the nuclear sites.

As the doses of workers at TEPCO Fukushima Daiichi Nuclear Power Plant occupied a majority of the collective dose in statistical data categorized as normal work, the situation of exposure dose control for the other nuclear facilities were not immediately clear. Therefore, the dose data excluding those for Fukushima Daiichi Nuclear Power Plant were also compiled.

In addition to the statistics in the category of normal work, the dose data of emergency work for the accident of Fukushima Daiichi Nuclear Power Plant caused by the East Japan Earthquake and the subsequent tsunami on 11 March, 2011 were also released.

2. List of nuclear licensees that are part of the Nuclear Registration and Management System

The statistical data were based on the dose data registered by the following nuclear licensees in RADREC. Names of the nuclear sites are shown in parentheses.

- ① Japan Atomic Energy Agency (Nuclear Science Research Institute, Nuclear Fuel Cycle Engineering Labs, Oarai, Naka, Kansai, Takasaki, Tono, Ningyo-toge Fugen, Monju, Mutsu)
- ② Japan Nuclear Fuel Ltd. (Enrichment and Disposal Plants, Reprocessing Plant)
- ③ Hokkaido Electric Power Co., Inc. (Tomari)
- ④ Tohoku Electric Power Co., Inc. (Onagawa, Higashidori)
- ⑤ Tokyo Electric Power Co. (Fukushima No. 1, Fukushima No. 2, Kashiwazaki-Kariwa)
- ⑥ Chubu Electric Power Co., Inc. (Hamaoka)
- ⑦ Hokuriku Electric Power Co. (Shiga)
- ⑧ The Kansai Electric Power Co., Inc. (Mihama, Takahama, Ooi)
- ⑨ The Chugoku Electric Power Co., Inc. (Shimane)
- ⑩ Shikoku Electric Power Co., Inc. (Ikata)
- ⑪ Kyushu Electric Power Co., Inc. (Genkai Sendai)
- ⑫ The Japan Atomic power Company (Tokai, Tokai No. 2, Tsuruga)
- ⑬ Nuclear Fuel Industries, Ltd. (Kumatori, Tokai)
- ⑭ Sumitomo Metal Mining Co., Ltd. (Tokai)
- ⑮ Global Nuclear Fuel Co., Ltd. (Yokosuka)
- ⑯ Mitsubishi Nuclear Fuel (Tokai)
- ⑰ JCO Co., Ltd. (Tokai)

3. Data compilation method

The statistical data are based on doses of the workers engaged in radiation work of the nuclear licensees that have joined the Nuclear Registration and Management System compiled by RADREC.

- (1) These statistical data are based on registered data provided by the nuclear licensees as of 1 Jun 2015.
- (2) The doses compiled are the effective doses, i.e. the total of both external exposure doses and internal exposure doses.
- (3) Doses of workers engaged in the emergency work at Fukushima Daiichi Nuclear Power Plant were registered by Tokyo Electric Power Co., Inc., and involves doses of all work carried out from 11 March 2011 to 30 November 2011 and the special work that followed this period. The special work was to maintain the function of cooling reactors or to maintain the function to control or prevent the release of radioactive materials.

- (4) “Maximum dose,” “collective dose,” “ mean dose,” and “%” were calculated by rounding to one decimal place. This procedure may result in the totals in the tables not adding up or to total percent values other than 100%.
- (5) The ages of the workers in the statistics were based on the Western style of calculating age, with day of birth as zero, as of 31 March 2014.
- (6) The “Total number” of radiation workers were compiled based on distinct individuals, so that workers who worked at more than one nuclear site were only counted once.

【Exposure Dose Limits for workers】

1. Dose limits for normal work

The exposure dose limit for workers is set at 100 millisieverts (mSv) per five years and 50 mSv per one year (the dose limit for female workers (excluding those who are indicated with no possibility of pregnancy ,and those who are pregnant) is set at 5 mSv over 3 months beyond the dose limit conditions above). Five years refers to the statutory period that started on 1 April 2001 and has been renewed every subsequent five years.

2. Dose limits for emergency work related to the accident of Fukushima Daiichi Nuclear Power Plant

Regardless of the dose limits noted above for normal radiation work, dose limits for emergency workers are set at 100 mSv during a period of emergency work in the “Ordinance on Prevention of Ionizing Radiation Hazards,” etc. In the case of the accident of Fukushima Daiichi Nuclear Power Plant, special measures applied as follows:

(1) 14 March 2011

Dose limit changed from 100 mSv to 250 mSv the day after the “Declaration of a Nuclear Emergency Situation” (11 March 2011)

(2) From 1 November 2011

Dose limit restricted only to work designated by the Minister of Health, Labor and Welfare.

(3) From 16 December 2011

Dose limits for normal work have been applied in principle (100 mSv per five years and 50 mSv per one year). However, 100 mSv was set as the upper limit for special radiation work.*1 For workers who possess specialized knowledge and experience, the dose limit was set at 250 mSv until 30 April 2012 as a transitional measure.*2

*1 Work to maintain the function of cooling reactors or to maintain the function to control or prevent the release of radioactive materials..

*2 Workers who were exposed to more than 100 mSv in emergency work through 12 December 2011. As they possess highly specialized knowledge and experience in special work, such as maintenance of the

cooling function of reactors, workers to take their place could not be found easily.

[Definition of terminology]

- (1) Radiation Worker: Worker who is designated by nuclear licensees as a radiation worker based on the “Law for the Regulation of Nuclear Source Material, Nuclear Fuel Material, and Reactors” whose core occupation is in radiation control areas, excluding people who enter radiation control areas occasionally.
- (2) Exposure doses: Exposure doses of workers engaged in nuclear facilities recorded in RADREC accumulated in one fiscal year (1 April to 31 March).
- (3) Five-year exposure doses: Exposure doses accumulated in the statutory five-year period to control long-term dose limit. The first period started on 1 April 2001, with exposure doses accumulating every subsequent five years. Dose data for the present five-year period have been compiling from 2010 to 2015.
- (4) Transitional doses: Exposure doses accumulated up to the end of each fiscal year during the five-year period stipulated in the row in question. (Here, the exposure doses of 4 years in fiscal 2011, 2012, 2013 and 2014 were totaled.)
- (5) Number of engaged sites in a year: Number of engaged sites in a year means the number of nuclear sites where workers were engaged in radiation work during the period (fiscal year) when the statistical data were compiled. The total number of engaged sites in fiscal 2014 was 37. Even if a worker was engaged in radiation work at one nuclear site in several times in a year, that counted as only one engaged site.
- (6) Number of engaged sites in four years: Number of engaged sites in four years means the number of nuclear sites where workers were engaged in radiation works during the period of statistical data compilation (fiscal years 2011 to 2014). The number of engaged sites from fiscal 2011 through fiscal 2014 was 37.

List of statistical data of doses

1. Dose Distribution of Workers by Age {Fiscal 2014} (Table)
2. Dose Distribution of Workers by Age {Fiscal 2014} (Figure)
3. Dose Distribution of Workers by Age {Fiscal 2014} (Excluding the Data for Fukushima Daiichi Nuclear Power Plant) (Figure)
4. Dose Distribution of Workers by Age {Fiscal 2014} (Excluding the data for Fukushima Daiichi Nuclear Power Plant) (Table)
5. Dose Distribution of Workers by Gender {Fiscal 2014} (Table)
6. Annual Trends of Numbers of Workers by Age {Fiscal 2010–2014} (Figure)
7. Annual Trends of Numbers of Workers by Dose Range {Fiscal 2010–2014} (Figure)
8. Dose Distribution of Workers by Number of Engaged Sites {Fiscal 2014} (Table)
9. Ratio of Number of Workers by Number of Engaged Sites {Fiscal 2014} (Figure)

10. Annual Trends of Ratio of Workers by Number of Engaged Sites {Fiscal 2010–2014}
(Figure)
11. Dose Distribution of Workers by Number of Engaged Sites {Fiscal 2014}(Excluding
The Data for Fukushima Daiichi Nuclear Power Plant)(Table)
12. Dose Distribution of Workers by Number of Engaged Sites {Fiscal 2014}
(Excluding The Data for Fukushima Daiichi Nuclear Power Plant) (Figure)
13. Transitional Dose Distribution of Workers by Number of Engaged Sites in Latest
Four Years{Fiscal 2011–2014} (Table)
14. Dose Distribution of Workers in The Emergency Works by Age {Fiscal 2010–2014}
(Table)
15. Dose Distribution of Workers in The Emergency Works by Age {Fiscal 2010–2014}
(Figure)
16. Annual Trends of Dose Distribution of Workers in The Emergency Works {Fiscal
2010–2014} (Table)

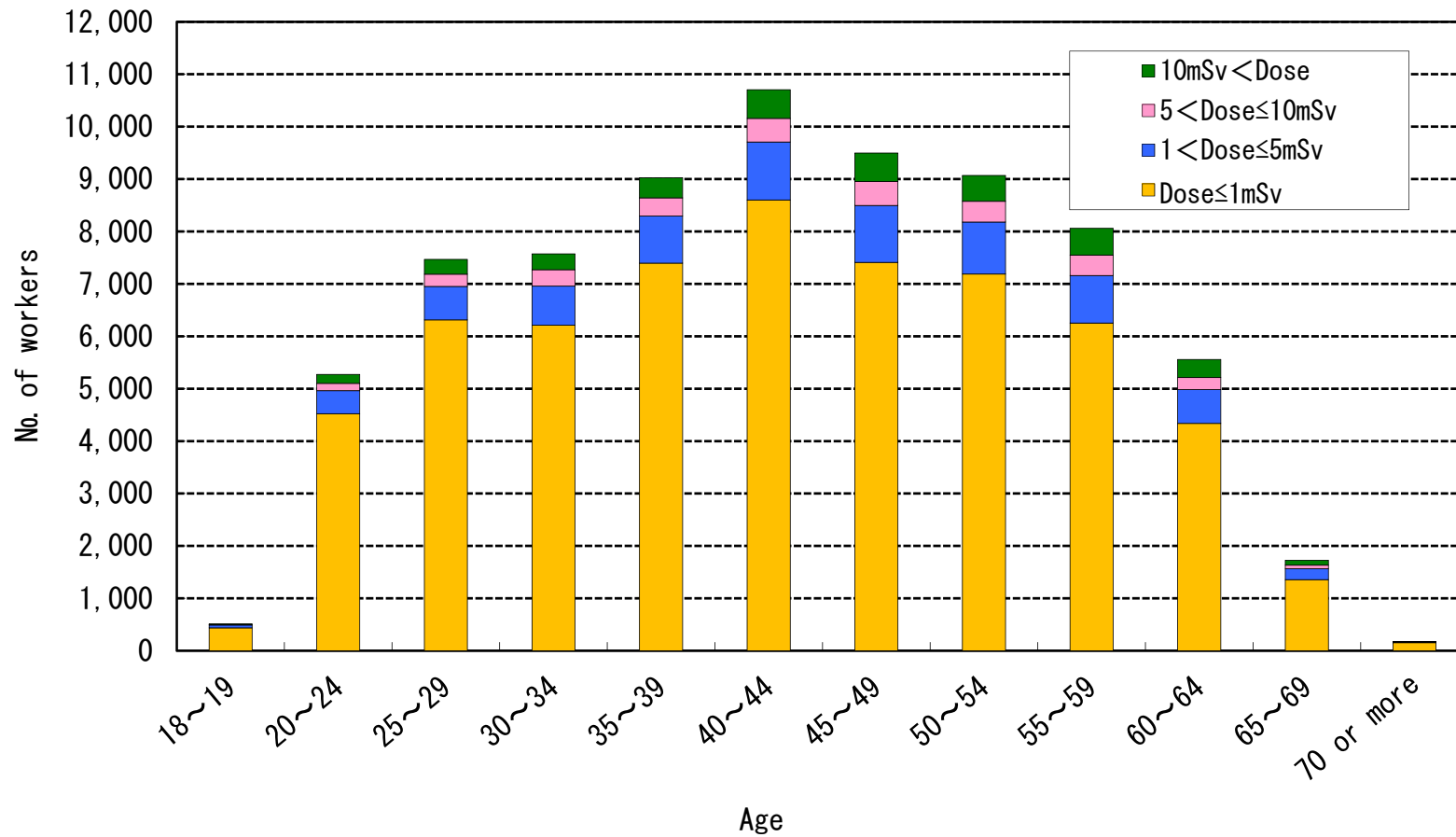
1. Dose Distribution of Workers by Age {Fiscal 2014}

| Dose (mSv) Age | Number of workers | | | | | | | | | | | | Total no. of workers (%) | Dose | | |
|--------------------------------|-------------------|-------------|-------------|-------------|--------------|-------------|-------------|-------------|-------------|-------------|-------------|---------|--------------------------|--------------------------------|------------|-----------|
| | Dose≤1 | 1<Dose ≤2.5 | 2.5<Dose ≤5 | 5<Dose ≤7.5 | 7.5<Dose ≤10 | 10<Dose ≤15 | 15<Dose ≤20 | 20<Dose ≤25 | 25<Dose ≤30 | 30<Dose ≤40 | 40<Dose ≤50 | 50<Dose | | Collective dose (person · mSv) | Mean (mSv) | Max (mSv) |
| 18~19 | 435 | 31 | 23 | 6 | 3 | 9 | 5 | 0 | 1 | 0 | 0 | 0 | 513 (0.7) | 467.8 | 0.9 | 29.8 |
| 20~24 | 4,522 | 272 | 167 | 89 | 53 | 76 | 52 | 19 | 7 | 17 | 0 | 0 | 5,274 (7.1) | 5,545.7 | 1.1 | 39.4 |
| 25~29 | 6,314 | 394 | 244 | 140 | 94 | 165 | 68 | 15 | 16 | 18 | 0 | 0 | 7,468 (10.0) | 8,356.9 | 1.1 | 37.9 |
| 30~34 | 6,209 | 445 | 302 | 180 | 135 | 161 | 76 | 24 | 18 | 22 | 0 | 0 | 7,572 (10.1) | 9,811.7 | 1.3 | 39.5 |
| 35~39 | 7,397 | 521 | 375 | 192 | 157 | 178 | 110 | 35 | 24 | 38 | 0 | 0 | 9,027 (12.1) | 12,302.7 | 1.4 | 38.6 |
| 40~44 | 8,601 | 659 | 448 | 262 | 187 | 247 | 154 | 58 | 45 | 45 | 0 | 0 | 10,706 (14.3) | 16,496.7 | 1.5 | 39.9 |
| 45~49 | 7,411 | 635 | 449 | 259 | 198 | 253 | 139 | 56 | 51 | 44 | 0 | 0 | 9,495 (12.7) | 16,360.0 | 1.7 | 39.7 |
| 50~54 | 7,188 | 580 | 411 | 234 | 164 | 219 | 136 | 53 | 37 | 48 | 0 | 0 | 9,070 (12.2) | 14,886.9 | 1.6 | 39.0 |
| 55~59 | 6,252 | 526 | 382 | 220 | 171 | 234 | 123 | 50 | 47 | 54 | 0 | 0 | 8,059 (10.8) | 14,889.8 | 1.8 | 39.8 |
| 60~64 | 4,339 | 390 | 252 | 122 | 111 | 145 | 81 | 35 | 26 | 56 | 0 | 0 | 5,557 (7.4) | 10,238.9 | 1.8 | 37.8 |
| 65~69 | 1,358 | 138 | 68 | 39 | 29 | 37 | 17 | 14 | 8 | 18 | 0 | 0 | 1,726 (2.3) | 2,998.0 | 1.7 | 39.3 |
| 70 or more | 155 | 6 | 6 | 4 | 3 | 2 | 0 | 1 | 0 | 0 | 0 | 0 | 177 (0.2) | 139.0 | 0.8 | 22.2 |
| Total no. of workers | 60,181 | 4,597 | 3,127 | 1,747 | 1,305 | 1,726 | 961 | 360 | 280 | 360 | 0 | 0 | 74,644 (100.0) | — | — | — |
| Collective Dose (person · mSv) | 5,705.8 | 7,544.9 | 11,286.7 | 10,835.6 | 11,394.3 | 21,277.9 | 16,353.6 | 8,039.1 | 7,659.6 | 12,396.6 | 0.0 | 0.0 | — | 112,494.0 | 1.5 | 39.9 |

[Notes on the table]

- How to read the table entries: The number "394" in the box for the age row of "25~29" and the dose "1<Dose≤2.5" means that there were 394 workers between age 25 and 29 inclusive whose radiation doses were in the range of greater than 1 and less than or equal to 2.5 millisieverts in fiscal 2014.
- The workers' ages are based on the Western style of calculating age as 31 March 2015.
- Dose data of the emergency workers at Fukushima Daiichi Nuclear Plant are not included.

2. Dose Distribution of Workers by Age {Fiscal 2014}



* This figure is based on the data in the Table 1 "Dose Distributin of Workers by Age {Fiscal 2014}.

* Dose data of the emergency workers at Fukushima Daiichi Nuclear Power Plant are not included.

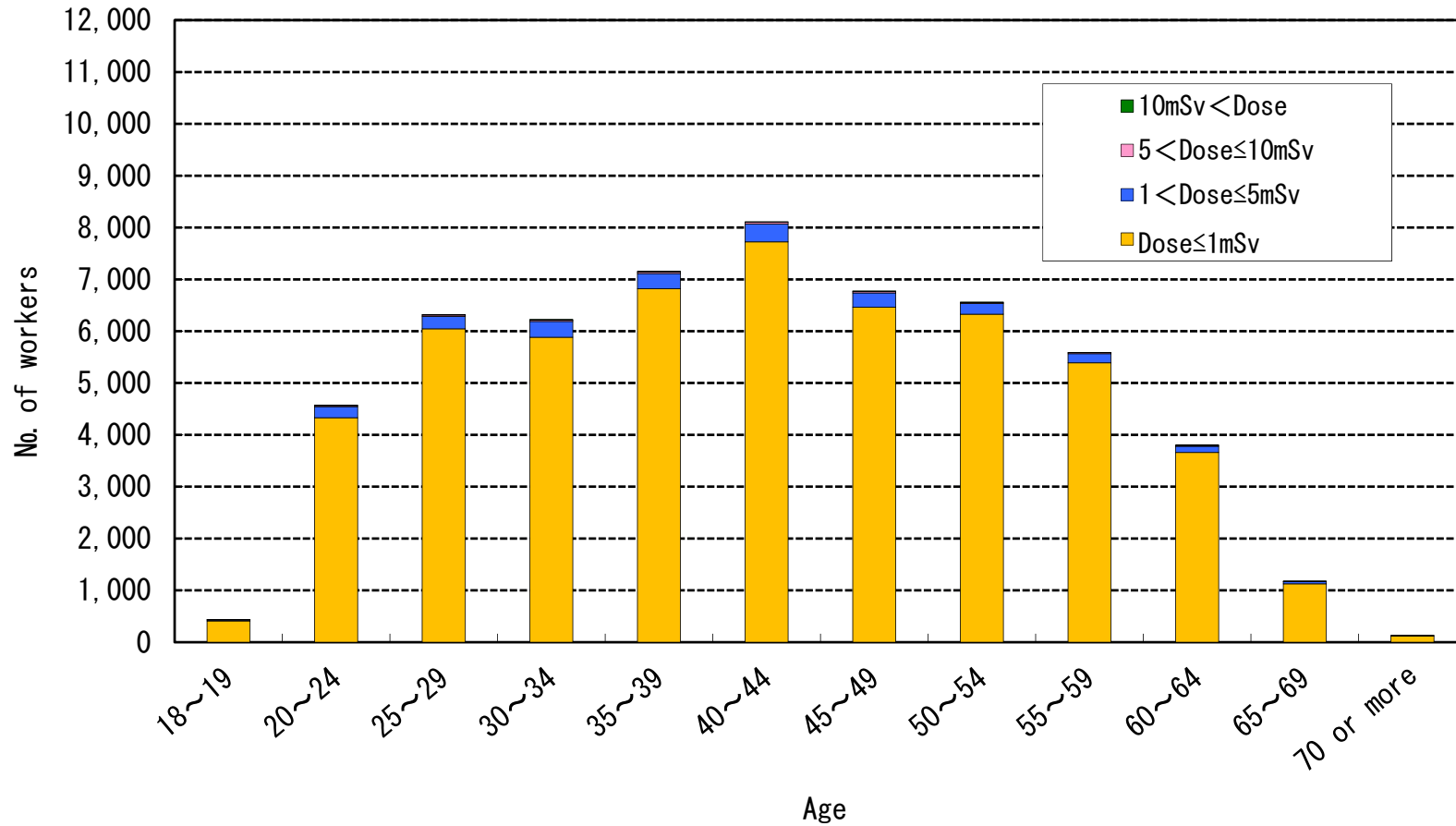
3. Dose Distribution of Workers by Age {Fiscal 2014} (Excluding the Data for Fukushima Daiichi Nuclear Power Plant)

| Dose (mSv) Age | Number of workers | | | | | | | | | | | | Total no. of workers (%) | Dose | | |
|--------------------------------|-------------------|----------------|----------------|----------------|-----------------|----------------|----------------|----------------|----------------|----------------|----------------|---------|-----------------------------|-----------------------------------|---------------|--------------|
| | Dose≤1 | 1<Dose ≤2.5 | 2.5<Dose ≤5 | 5<Dose ≤7.5 | 7.5<Dose ≤10 | 10<Dose ≤15 | 15<Dose ≤20 | 20<Dose ≤25 | 25<Dose ≤30 | 30<Dose ≤40 | 40<Dose ≤50 | 50<Dose | | Collective Dose (person · mSv) | Mean (mSv) | Max (mSv) |
| 18~19 | 410 | 18 | 3 | 1 | 1 | 1 | 0 | 0 | 0 | 0 | 0 | 0 | 434 (0.8) | 99.6 | 0.2 | 10.5 |
| 20~24 | 4,330 | 164 | 52 | 15 | 3 | 6 | 2 | 0 | 0 | 0 | 0 | 0 | 4,572 (8.0) | 1,029.4 | 0.2 | 19.9 |
| 25~29 | 6,047 | 177 | 62 | 21 | 5 | 8 | 2 | 0 | 0 | 0 | 0 | 0 | 6,322 (11.1) | 1,275.3 | 0.2 | 19.8 |
| 30~34 | 5,882 | 225 | 80 | 17 | 12 | 6 | 2 | 1 | 0 | 0 | 0 | 0 | 6,225 (10.9) | 1,429.3 | 0.2 | 20.7 |
| 35~39 | 6,820 | 217 | 75 | 20 | 13 | 8 | 2 | 0 | 0 | 0 | 0 | 0 | 7,155 (12.6) | 1,454.7 | 0.2 | 20.0 |
| 40~44 | 7,724 | 243 | 100 | 21 | 12 | 10 | 1 | 0 | 0 | 0 | 0 | 0 | 8,111 (14.3) | 1,586.5 | 0.2 | 15.2 |
| 45~49 | 6,463 | 200 | 77 | 22 | 4 | 9 | 2 | 0 | 0 | 0 | 0 | 0 | 6,777 (11.9) | 1,309.3 | 0.2 | 19.1 |
| 50~54 | 6,327 | 148 | 60 | 14 | 5 | 8 | 1 | 0 | 0 | 0 | 0 | 0 | 6,563 (11.5) | 1,020.4 | 0.2 | 17.5 |
| 55~59 | 5,390 | 132 | 43 | 12 | 8 | 5 | 0 | 0 | 0 | 0 | 0 | 0 | 5,590 (9.8) | 817.1 | 0.1 | 15.0 |
| 60~64 | 3,659 | 85 | 36 | 9 | 9 | 4 | 1 | 0 | 0 | 0 | 0 | 0 | 3,803 (6.7) | 662.0 | 0.2 | 15.0 |
| 65~69 | 1,127 | 31 | 11 | 5 | 0 | 1 | 0 | 0 | 0 | 0 | 0 | 0 | 1,175 (2.1) | 198.5 | 0.2 | 12.4 |
| 70 or more | 124 | 1 | 1 | 2 | 0 | 0 | 0 | 0 | 0 | 0 | 0 | 0 | 128 (0.2) | 22.6 | 0.2 | 6.7 |
| Total no. of workers | 54,303 | 1,641 | 600 | 159 | 72 | 66 | 13 | 1 | 0 | 0 | 0 | 0 | 56,855 (100.0) | — | — | — |
| Collective Dose (person · mSv) | 3,609.0 | 2,567.3 | 2,079.1 | 951.5 | 619.6 | 827.9 | 229.7 | 20.7 | 0.0 | 0.0 | 0.0 | 0.0 | — | 10,904.7 | 0.2 | 20.7 |

[Notes on the table]

- This table was compiled by excluding the data for Fukushima Daiichi Nuclear Power Plant. The exposure dose data of workers at Fukushima Daiichi Nuclear Power Plant are shown in website of Tokyo Electric Power Co., Inc.
- How to read the table entries: The number "177" in the box for the age row of "25~29" and the dose "1<Dose≤2.5" means that there were 177 workers between age 25 and 29 inclusive whose radiation doses were in the range of greater than 1 and less than or equal to 2.5 millisieverts in fiscal 2014.
- The workers' ages are based on the Western style of calculating age as 31 March 2015.
- Dose data of the emergency workers at Fukushima Daiichi Nuclear Power Plant are not included.

4. Dose Distribution of Workers by Age {Fiscal 2014}
 (Excluding the Data for Fukushima Daiichi Nuclear Power Plant)



* This figure is based on the data in the Table 3 "Dose Distribution of Workers by Age {Fiscal 2014} (Excluding the data for Fukushima Daiichi Nuclear Power Plant)."

* Dose data of the emergency workers at Fukushima Daiichi Nuclear Power Plant are not included.

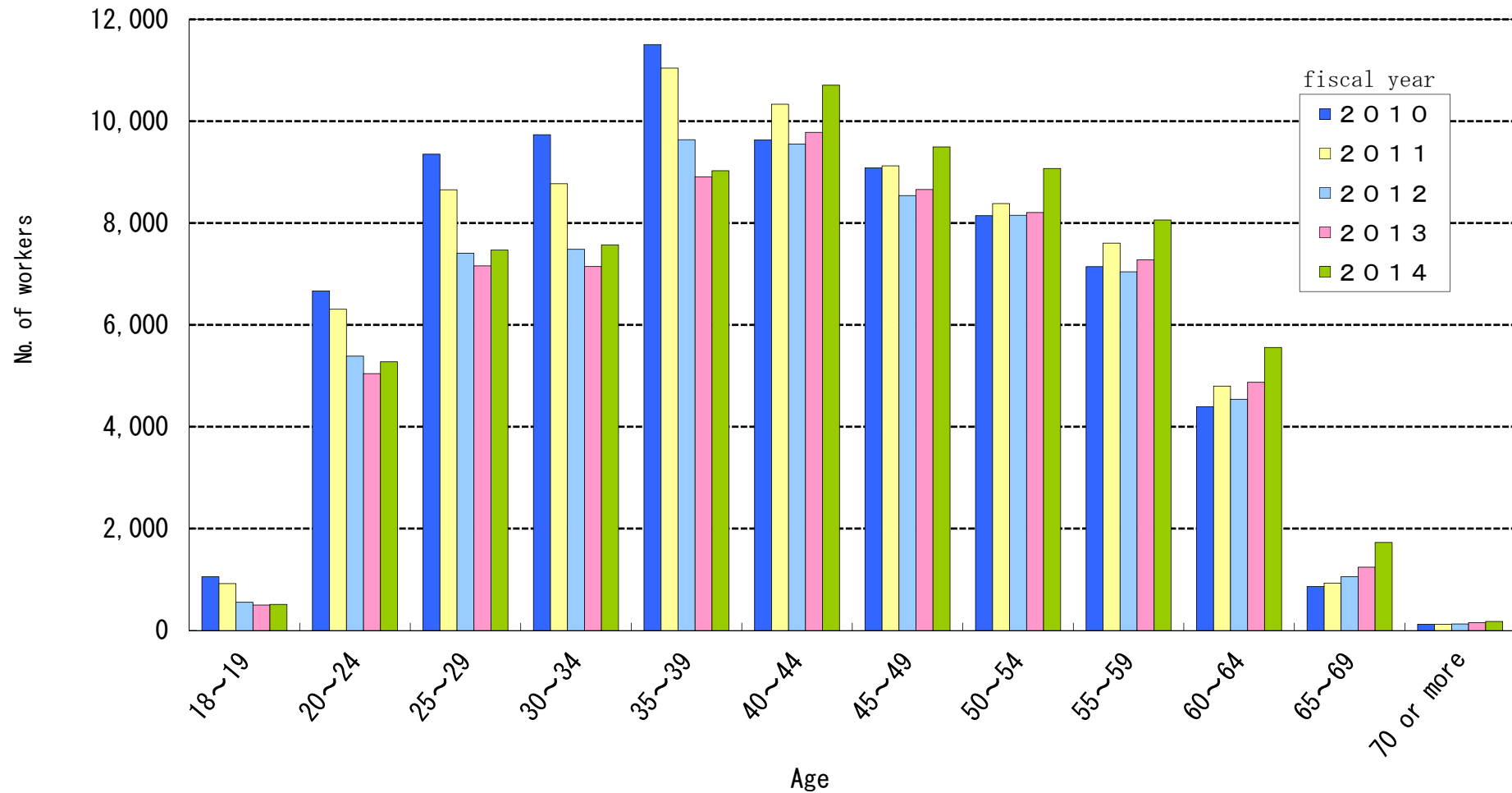
5. Dose Distribution of Workers by Gender {Fiscal 2014}

| No. of workers Dose (mSv) | Man (%) | Femal (%) | Total no. of workers (%) | Collective dose (person·mSv) (%) | |
|--|-------------------|----------------|--------------------------------|--|--|
| Dose ≤1 | 59,408 (80.4) | 773 (99.9) | 60,181 (80.6) | 5,705.8 (5.1) | |
| 1 < dose ≤2.5 | 4,596 (6.2) | 1 (0.1) | 4,597 (6.2) | 7,544.9 (6.7) | |
| 2.5 < Dose ≤5 | 3,127 (4.2) | 0 (0.0) | 3,127 (4.2) | 11,286.7 (10.0) | |
| 5 < Dose ≤7.5 | 1,747 (2.4) | 0 (0.0) | 1,747 (2.3) | 10,835.6 (9.6) | |
| 7.5 < Dose ≤10 | 1,305 (1.8) | 0 (0.0) | 1,305 (1.7) | 11,394.3 (10.1) | |
| 10 < Dose ≤15 | 1,726 (2.3) | 0 (0.0) | 1,726 (2.3) | 21,277.9 (18.9) | |
| 15 < Dose ≤20 | 961 (1.3) | 0 (0.0) | 961 (1.3) | 16,353.6 (14.5) | |
| 20 < dose ≤25 | 360 (0.5) | 0 (0.0) | 360 (0.5) | 8,039.1 (7.1) | |
| 25 < Dose ≤30 | 280 (0.4) | 0 (0.0) | 280 (0.4) | 7,659.6 (6.8) | |
| 30 < Dose ≤40 | 360 (0.5) | 0 (0.0) | 360 (0.5) | 12,396.6 (11.0) | |
| 40 < Dose ≤50 | 0 (0.0) | 0 (0.0) | 0 (0.0) | 0.0 (0.0) | |
| 50 < Dose | 0 (0.0) | 0 (0.0) | 0 (0.0) | 0.0 (0.0) | |
| Total no. of wokers (%) | 73,870 (100.0) | 774 (100.0) | 74,644 (100.0) | 112,494.1 (100.0) | |
| Total no. of wokers Ratio of man and famel (%) | 73,870 (99.0) | 774 (1.0) | / | | |
| Mean dose (mSv) | 1.5 | 0.0 | 1.5 | / | |
| Collective dose (person · mSv) | 112,481.8 | 12.2 | 112,494.0 | / | |
| Max dose (mSv) | 39.9 | 2.2 | 39.9 | / | |

[Notes on the table]

- How to read the table entries : The number "4,596" in the box of the dose row "1 < Dose ≤ 2.5 mSv" and the "man" column means that there were 4,596 man workers whose radiation doses were in the range of greater than 1 and less than or equal to 2 millisieverts in fiscal 2014.
- Dose data of the emergency workers at Fukushima Daiichi Nuclear Power Plant are not included.

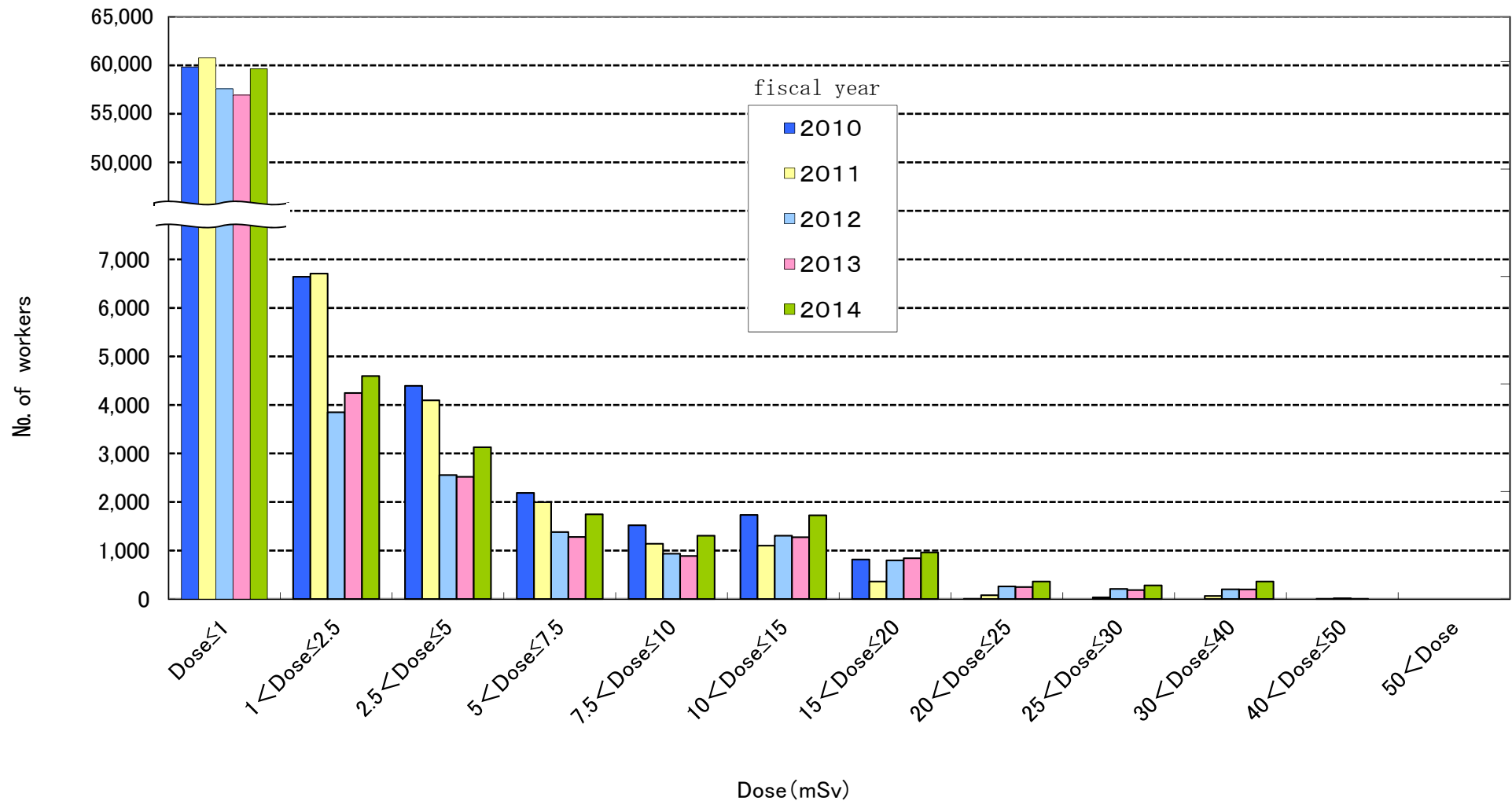
6. Annual Trends of Number of Workers by Age {Fiscal 2010~2014}



* This figure is based on the data in the Table 5 "Dose Distribution of Workers by Gender {Fiscal 2014} and those of the latest four years {Fiscal 2010~2013}.

* Dose data of the emergency workers at Fukushima Daiichi Nuclear Power Plant are not included.

7. Annual Trends of Number of Workers by Dose Range {Fiscal 2010–2014}



* This figure is based on the data in the Table 5 "Dose Distribution of Workers by Gender {Fiscal 2014} and those of the latest four years {Fiscal 2010~2013}.

* Dose data of the emergency workers at Fukushima Daiichi Nuclear Power Plant are not included.

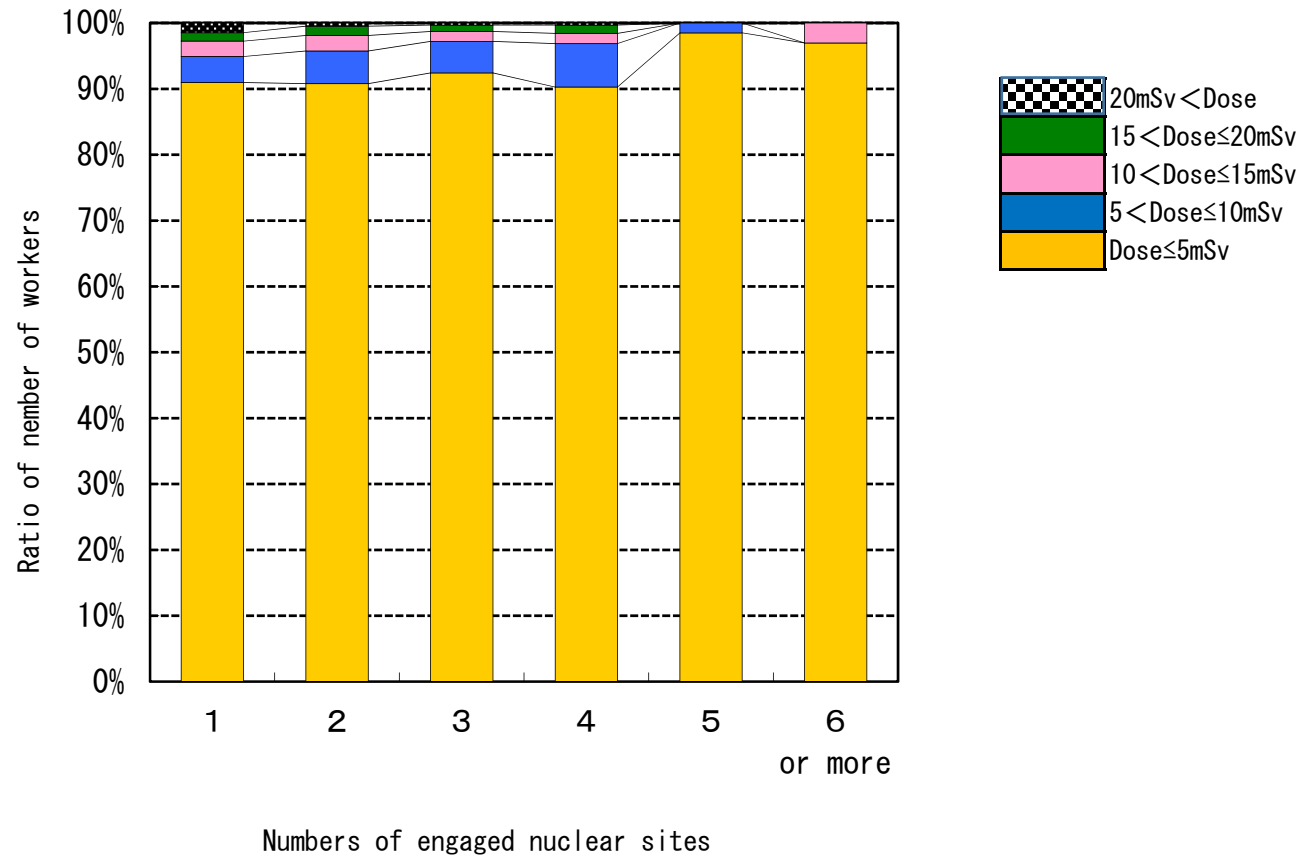
8. Dose Distribution of Workers by Number of Engaged Sites {Fiscal 2014}

| No. of engaged sites Dose (mSv) | 1 | 2 | 3 | 4 | 5 | 6 or more | Total no. of workers (%) |
|------------------------------------|------------------|-----------------|----------------|--------------|-------------|--------------|--------------------------------|
| Dose ≤ 5 | 59,485 | 6,874 | 1,160 | 288 | 66 | 32 | 67,905 (91.0) |
| 5 < Dose ≤ 10 | 2,596 | 374 | 60 | 21 | 1 | 0 | 3,052 (4.1) |
| 10 < Dose ≤ 15 | 1,521 | 180 | 19 | 5 | 0 | 1 | 1,726 (2.3) |
| 15 < dose ≤ 20 | 839 | 106 | 12 | 4 | 0 | 0 | 961 (1.3) |
| 20 < Dose ≤ 25 | 343 | 14 | 3 | 0 | 0 | 0 | 360 (0.5) |
| 25 < Dose ≤ 30 | 269 | 10 | 1 | 0 | 0 | 0 | 280 (0.3) |
| 30 < Dose ≤ 40 | 347 | 12 | 0 | 1 | 0 | 0 | 360 (0.5) |
| 40 < Dose ≤ 50 | 0 | 0 | 0 | 0 | 0 | 0 | 0 (0.0) |
| 50 < Dose | 0 | 0 | 0 | 0 | 0 | 0 | 0 (0.0) |
| Total no. of workers (%) | 65,400 (87.7) | 7,570 (10.1) | 1,255 (1.7) | 319 (0.4) | 67 (0.1) | 33 (0.0) | 74,644 (100.0) |
| Mean dose (mSv) | 1.5 | 1.5 | 1.3 | 1.4 | 0.6 | 0.6 | 1.5 |

[Notes on the table]

- How to read the table entries : The number "66" in the box for the dose row of "Dose≤5" and the number of engaged sites of "5" column means that there were 66 workers who were engaged in five engaged sites and whose radiation doses were less than 5 millisievert in fiscal 2014.
- Dose data of the emergency workers at Fukushima Daiichi Nuclear Power Plant are not included.

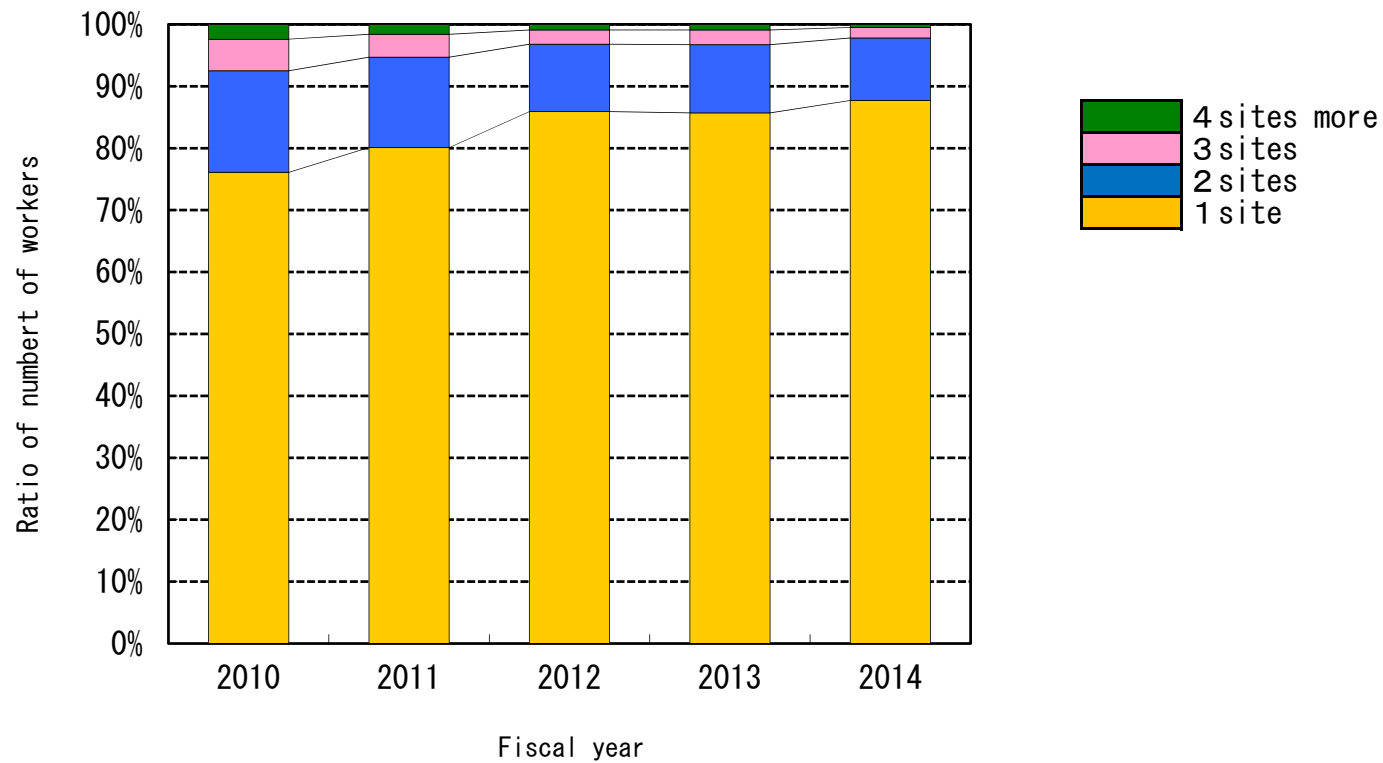
9. Ratio of Number of Workers by Number of Engaged Sites {Fiscal 2014}



* This figure is based on the data in the Table 8 "Dose Distribution of Workers by Number of Engaged Sites {Fiscal 2014}".

* Dose data of the emergency workers at Fukushima Daiichi Nuclear Power Plant are not included.

10. Annual Trends of Ratio of Workers by Number of Engaged Sites {Fiscal 2010-2014}



* This figure is based on the data in the Table 8 "Dose Distribution of Workers by Number of Engaged Sites [Fiscal 2014] and those of the latest four years {Fiscal 2010~2013}.

* Dose data of the emergency workers at Fukushima Daiichi Nuclear Power Plant are not included.

11. Dose Distribution of Workers by Number of Engaged Sites {Fiscal 2014}

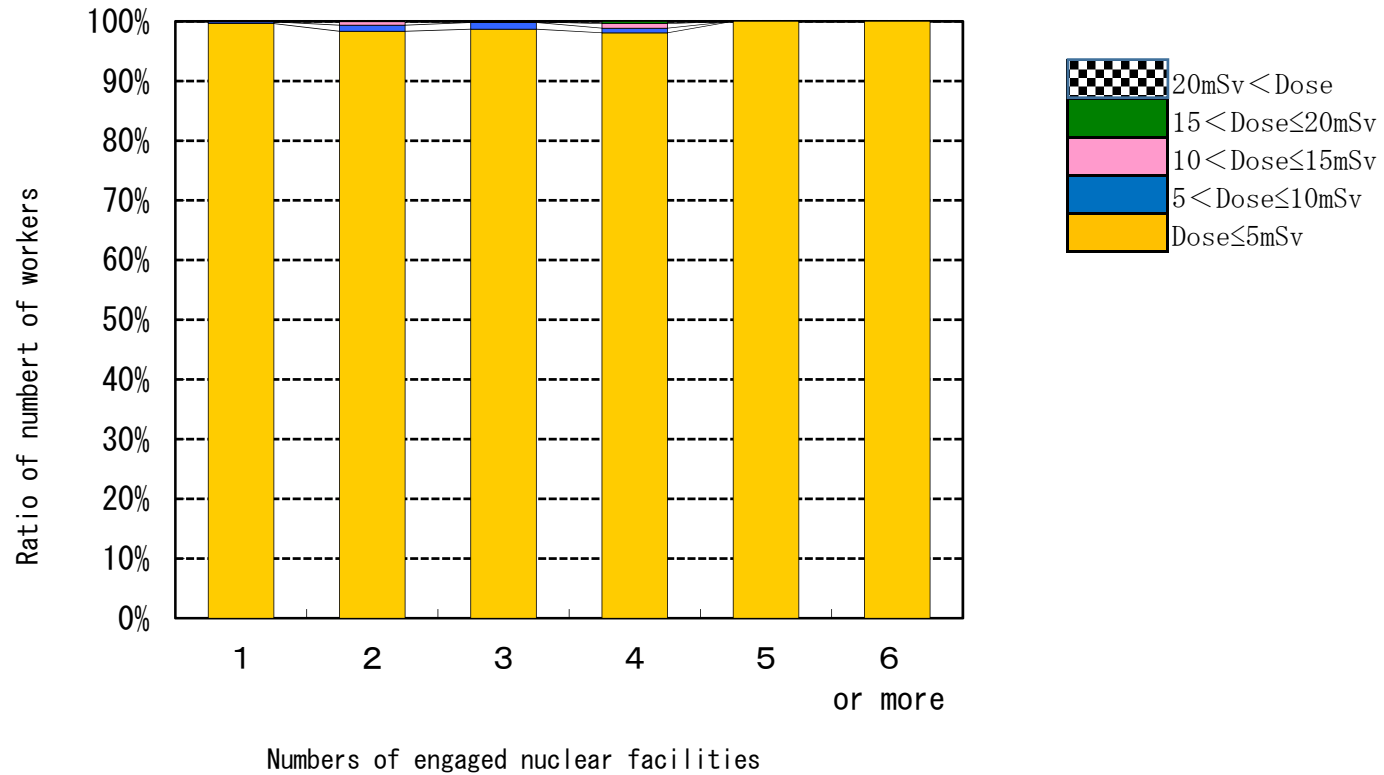
(Excluding The Data for Fukushima Daiichi Nuclear Power Plant)

| No. of engaged sites Dose (mSv) | 1 | 2 | 3 | 4 | 5 | 6 or more | Total no. of workers (%) |
|------------------------------------|------------------|-----------------|----------------|--------------|-------------|--------------|--------------------------------|
| Dose ≤ 5 | 49,358 | 5,814 | 1,039 | 254 | 53 | 26 | 56,544 (99.5) |
| 5 < Dose ≤ 10 | 156 | 61 | 12 | 2 | 0 | 0 | 231 (0.4) |
| 10 < Dose ≤ 15 | 29 | 34 | 1 | 2 | 0 | 0 | 66 (0.1) |
| 15 < Dose ≤ 20 | 8 | 3 | 1 | 1 | 0 | 0 | 13 (0.0) |
| 20 < Dose ≤ 25 | 0 | 1 | 0 | 0 | 0 | 0 | 1 (0.0) |
| 25 < Dose ≤ 30 | 0 | 0 | 0 | 0 | 0 | 0 | 0 (0.0) |
| 30 < Dose ≤ 40 | 0 | 0 | 0 | 0 | 0 | 0 | 0 (0.0) |
| 40 < Dose ≤ 50 | 0 | 0 | 0 | 0 | 0 | 0 | 0 (0.0) |
| 50 < Dose | 0 | 0 | 0 | 0 | 0 | 0 | 0 (0.0) |
| Total no. of workers (%) | 49,551 (87.2) | 5,913 (10.4) | 1,053 (1.9) | 259 (0.4) | 53 (0.1) | 26 (0.0) | 56,855 (100.0) |
| Means dose (mSv) | 0.2 | 0.4 | 0.5 | 0.5 | 0.2 | 0.1 | 0.2 |

[Notes on the table]

- This table was compiled by excluding the data for Fukushima Daiichi Nuclear Power Plant. The dose data of workers at Fukushima Daiichi Nuclear Power Plant are shown in HP of Tokyo Electric Power Co., Inc.
- How to read the table entries : The number "53" in the box for the dose row of "Dose≤5" and the number of engaged sites of "5" column means that there were 53 workers who were engaged in five nuclear sites and whose radiation doses were less than 5 millisievert in fiscal 2014.
- Dose data of the emergency workers at Fukushima Daiichi Nuclear Power Plant are not included.

12. Dose Distribution of Workers by Number of Engaged Sites
 {Fiscal 2014}
 (Excluding The Data for Fukushima Daiichi Nuclear Power Plant)



- This figure is based on the data in the Table 11 "Dose Distribution of Workers by Number of Engaged Sites {Fiscal 2014}".
- Dose data of the emergency workers at Fukushima Daiichi Nuclear Plant are not included.

13. Transitial Dose Distribution of Workers by Number of Engaged Sites in Latest Four Years {Fiscal 2011-2014}

| No. of engaged sites in four years Dose (mSv) | 1 | 2 | 3 | 4 | 5 | 6 | 7 | 8 or more | Total no. of workers (%) |
|---|------------------|------------------|----------------|----------------|----------------|--------------|--------------|--------------|--------------------------------|
| Dose ≤5 | 78,694 | 15,230 | 4,782 | 2,006 | 881 | 392 | 159 | 140 | 102,284 (84.8) |
| 5< Dose ≤10 | 3,963 | 1,482 | 764 | 433 | 220 | 119 | 49 | 23 | 7,053 (5.9) |
| 10< Dose ≤15 | 2,068 | 764 | 429 | 264 | 133 | 64 | 27 | 18 | 3,767 (3.1) |
| 15< Dose ≤20 | 1,298 | 493 | 276 | 143 | 89 | 35 | 25 | 9 | 2,368 (2.0) |
| 20< Dose ≤25 | 808 | 264 | 152 | 96 | 46 | 15 | 8 | 3 | 1,392 (1.2) |
| 25< Dose ≤30 | 611 | 202 | 98 | 62 | 28 | 16 | 6 | 4 | 1,027 (0.9) |
| 30< Dose ≤40 | 901 | 289 | 155 | 57 | 29 | 16 | 4 | 3 | 1,454 (1.2) |
| 40< Dose ≤50 | 390 | 147 | 80 | 25 | 15 | 7 | 1 | 0 | 665 (0.6) |
| 50< Dose ≤60 | 223 | 42 | 35 | 10 | 7 | 1 | 1 | 0 | 319 (0.3) |
| 60< Dose ≤70 | 106 | 14 | 11 | 8 | 2 | 2 | 0 | 0 | 143 (0.1) |
| 70< Dose ≤80 | 59 | 8 | 5 | 1 | 0 | 0 | 0 | 0 | 73 (0.1) |
| 80< Dose ≤90 | 2 | 0 | 1 | 0 | 0 | 0 | 0 | 0 | 3 (0.0) |
| 90< Dose ≤100 | 0 | 0 | 0 | 0 | 0 | 0 | 0 | 0 | 0 (0.0) |
| 100< Dose | 0 | 0 | 0 | 0 | 0 | 0 | 0 | 0 | 0 (0.0) |
| Total no. of workers (%) | 89,123 (73.9) | 18,935 (15.7) | 6,788 (5.6) | 3,105 (2.6) | 1,450 (1.2) | 667 (0.6) | 280 (0.2) | 200 (0.2) | 120,548 (100.0) |
| Mean dose (mSv) | 2.4 | 3.8 | 5.7 | 6.2 | 6.8 | 6.9 | 6.9 | 4.8 | 3.0 |

[Notes on the table]

- The exposure dose limits for workers are set at 100 millisievert per five years and 50 millisievert per one year. Five years means the statutory period that began 1 April 2001 renewed every subsequent five years.
- How to read the table entries : The number "220" in the box for the dose row of "5< Dose ≤10" and in column of the no. of engaged sites in four years "5" means that there were 220 workers who engaged in radiation works at five engaged sites in four years and whose radiation doses were greater than 5 and less than or equal to 10 millisieverts from 2011 to 2014(fiscal).
- Dose data of the emergency workers at Fukushima Daiichi Nuclear Power Plant are not included.

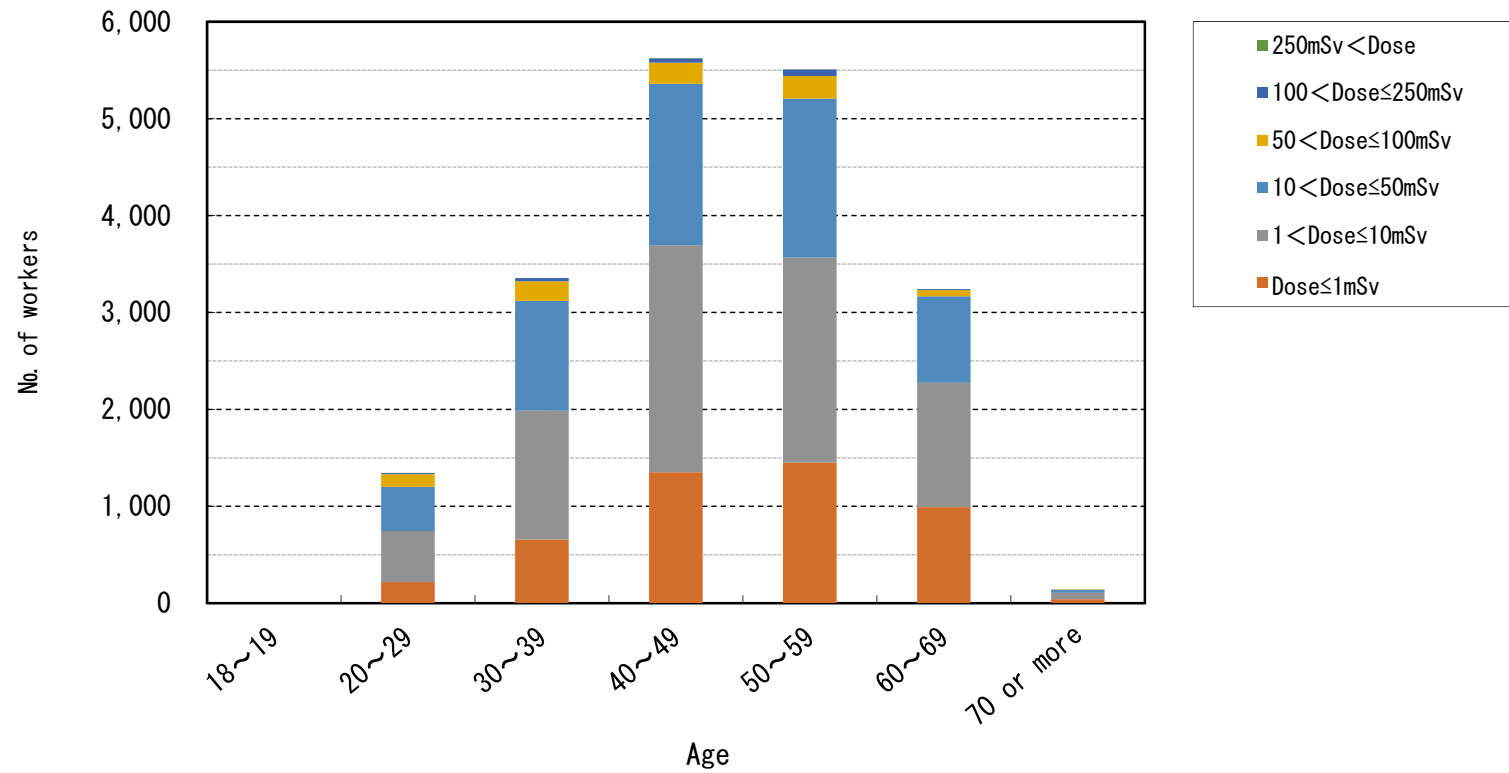
14. Dose Distribution of Workers Engaged in The Emergency Works by Age{Fiscal 2010-2014}

| Dose (mSv) Age | No. of workers | | | | | | | | | | | Total no. of workers (%) | Dose | | | | |
|------------------------------------|----------------|---------------|----------------|-----------------|-----------------|-----------------|------------------|-------------------|-------------------|-------------------|----------|--------------------------------|------------------------------------|---------------|--------------|-------|-----|
| | Dose ≤1 | 1< Dose ≤5 | 5< Dose ≤10 | 10< Dose ≤30 | 30< Dose ≤50 | 30< Dose ≤70 | 70< Dose ≤100 | 100< Dose ≤150 | 150< Dose ≤200 | 200< Dose ≤250 | 250<Dose | | Collective dose (person·mSv) | Mean (mSv) | Max (mSv) | | |
| 18~19 | 0 | 0 | 0 | 0 | 0 | 0 | 0 | 0 | 0 | 0 | 0 | 0 | 0 | (0.0) | 0.0 | 0.0 | 0.0 |
| 20~29 | 218 | 335 | 192 | 379 | 77 | 50 | 79 | 9 | 3 | 0 | 2 | 1,344 | (7.0) | 23,828.5 | 17.7 | 477.0 | |
| 30~39 | 657 | 837 | 493 | 909 | 224 | 102 | 99 | 29 | 1 | 3 | 1 | 3,355 | (17.5) | 49,520.4 | 14.8 | 311.0 | |
| 40~49 | 1,351 | 1,458 | 884 | 1,344 | 323 | 115 | 102 | 37 | 9 | 0 | 2 | 5,625 | (29.3) | 69,225.0 | 12.3 | 678.8 | |
| 50~59 | 1,451 | 1,344 | 772 | 1,247 | 392 | 134 | 99 | 55 | 13 | 0 | 1 | 5,508 | (28.7) | 71,852.5 | 13.0 | 353.1 | |
| 60~69 | 991 | 842 | 441 | 711 | 181 | 53 | 12 | 7 | 2 | 0 | 0 | 3,240 | (16.9) | 30,370.0 | 9.4 | 197.0 | |
| 70 or more | 41 | 46 | 20 | 29 | 4 | 0 | 3 | 0 | 0 | 0 | 0 | 143 | (0.7) | 1,196.7 | 8.4 | 89.5 | |
| Total no. of workers | 4,709 | 4,862 | 2,802 | 4,619 | 1,201 | 454 | 394 | 137 | 28 | 3 | 6 | 19,215 | (100.0) | — | — | — | |
| Collective dose (person·mSv) | 1745.6 | 12648.0 | 20803.3 | 80677.5 | 46029.3 | 26741.8 | 32427.9 | 16598.5 | 4790.2 | 704.6 | 2826.2 | — | | 245,992.9 | 12.8 | 678.8 | |

[Notes on the table]

- How to read the table entries: The number "379" in the box for the dose row of "10 < Dose ≤30" and column of age of "20~29" means that there were 379 workers between ages 20 and 29 inclusive at the end of fiscal 2014 and whose radiation doses were greater than 10 and less than or equal to 30 millisieverts.
- The workers' ages were based on the Western style of calculating age, with day of birth as zero, as 31 March 2015.

15. Dose Distribution of Workers Engaged in The Emergency Works by Age {Fiscal 2010-2014}



* This figure is based on the data in the Table 14 "Dose Distribution of Workers Engaged in The Emergency Works by Age {Fiscal 2010-2014}"

16. Annual Trends of Dose Distribution of Workers in The Emergency Works {Fiscal 2010-2014}

| fiscal year Dose (mSv) | No. of workers | | | | |
|---------------------------|-------------------|--------------------|-----------------|-----------------|-----------------|
| | 2010 | 2011 | 2012 | 2013 | 2014 |
| Dose ≤ 50 (%) | 3,569 (89.90) | 17,384 (99.00) | 651 (99.85) | 795 (100.00) | 758 (100.00) |
| 50 < Dose ≤ 100 (%) | 294 (7.41) | 166 (0.95) | 1 (0.15) | 0 (0.00) | 0 (0.00) |
| 100 < Dose ≤ 250 (%) | 101 (2.50) | 1 (0.01) | 0 (0.00) | 0 (0.00) | 0 (0.00) |
| 250 < Dose (%) | 6 (0.16) | 0 (0.00) | 0 (0.00) | 0 (0.00) | 0 (0.00) |
| Total no. of workers (%) | 3,970 (100.00) | 17,551 (100.00) | 652 (100.00) | 795 (100.00) | 758 (100.00) |

[Notes on the table]

- Radiation doses of workers engaged in the emergency works from 2010 to 2014(each fiscal year) were compiled.
- How to read the table entries : The number "294" in the box for the dose row of "50 < Dos ≤ 100" in fiscal 2010 means that there were 294 workers who engaged in the emergency works whoes radiation doses were greater than 50 and less than 100 millisieverts in this fiscal year.